

# **GMR Standard Performance Analysis Report - Sample**

## **Q1 2022 Quarterly Report**



**GMR.CA**  
GLOBAL MANAGER RESEARCH

**GMR Balanced Universe**

---

**Sample Balanced Fund**

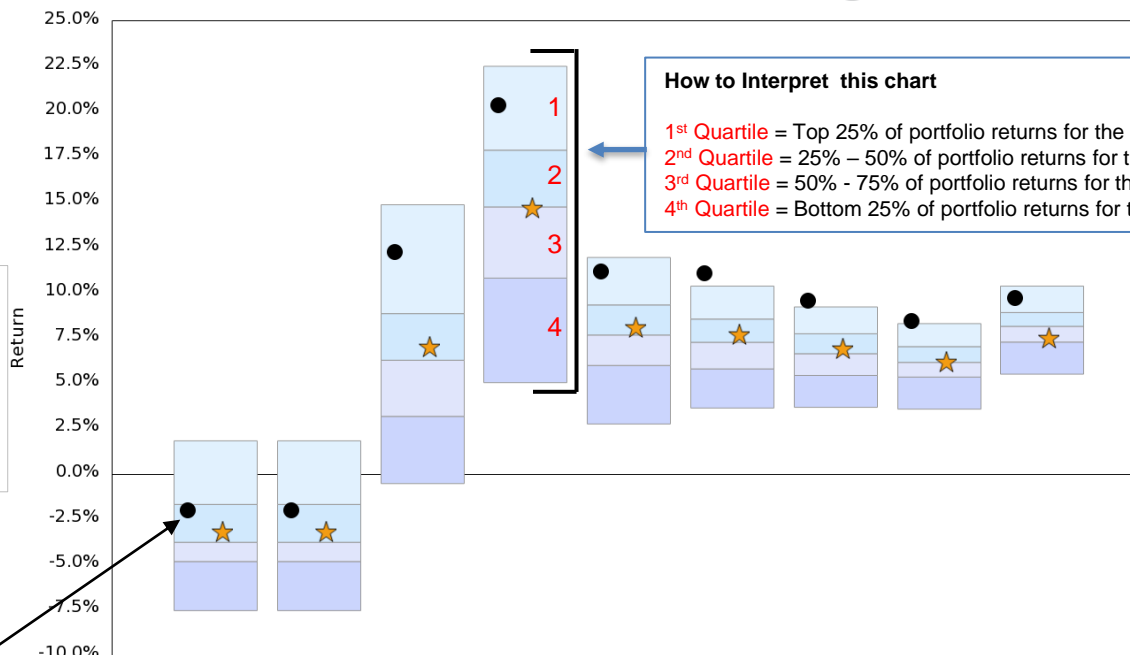
# Annualized Returns



● Sample Balanced Fund  
★ GMR Balanced Index

### Why is this chart is so popular?

- Industry standard visual to quickly see how a fund has performed against the selected peer group and benchmark.
- Easy to identify historical over or underperformance trends.



### Fund & Benchmark - rate of return and percentile ranking

	Three Months	YTD	Annualized Rate of Return as of March 31, 2022						
			1 Year	2 Years	3 Years	4 Years	5 Years	7 Years	10 Years
Top 5%	1.84	1.84	14.87	22.51	11.96	10.38	9.23	8.31	10.38
25th Percentile	-1.67	-1.67	8.86	17.88	9.34	8.56	7.75	7.04	8.92
<b>Median</b>	<b>-3.76</b>	<b>-3.76</b>	<b>6.29</b>	<b>14.75</b>	<b>7.68</b>	<b>7.28</b>	<b>6.65</b>	<b>6.17</b>	<b>8.16</b>
75th Percentile	-4.82	-4.82	3.19	10.82	6.00	5.81	5.45	5.36	7.29
Bottom 5%	-7.53	-7.53	-0.52	5.05	2.77	3.65	3.69	3.59	5.52
<b>Sample Balanced Fund</b>	<b>-1.99</b>	<b>-1.99</b>	<b>12.25</b>	<b>20.37</b>	<b>11.17</b>	<b>11.10</b>	<b>9.58</b>	<b>8.46</b>	<b>9.70</b>
Rank	27	27	10	13	7	4	3	5	11
<b>GMR Balanced Index</b>	<b>-3.16</b>	<b>-3.16</b>	<b>7.04</b>	<b>14.70</b>	<b>8.09</b>	<b>7.74</b>	<b>6.96</b>	<b>6.21</b>	<b>7.54</b>
Rank	37	37	44	51	46	43	44	49	71

Asset Class: Balanced.  
Benchmark: 5% iShares Premium Money Market ETF; 35% iShares CI MSCI World ETF

es

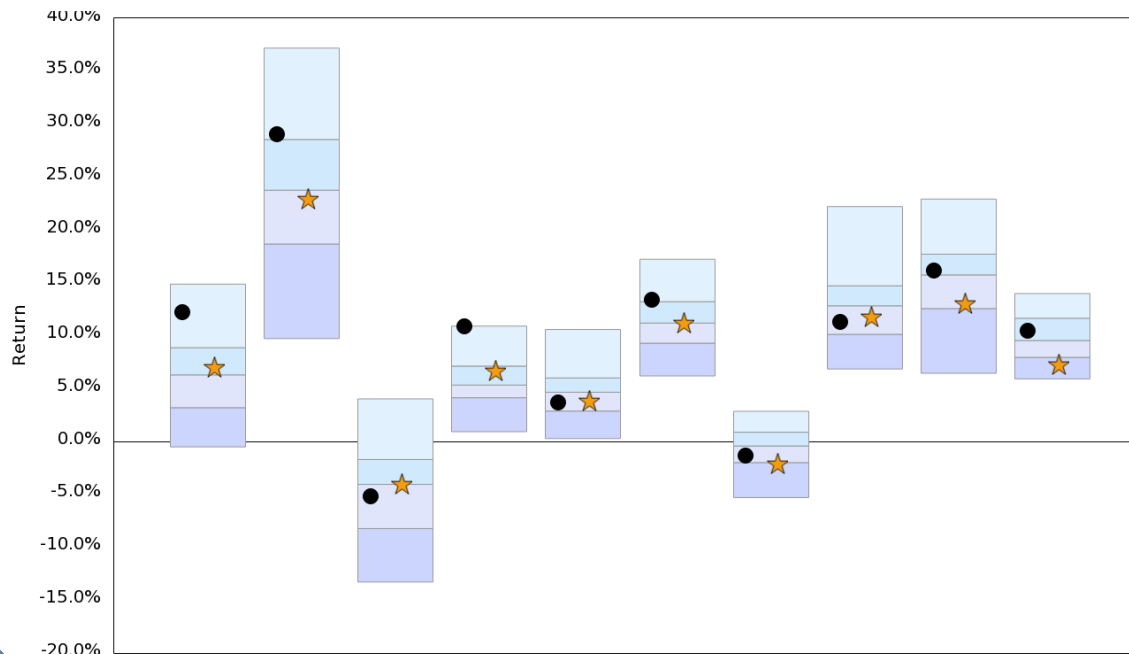
# Annual Returns



● Sample Balanced Fund  
★ GMR Balanced Index

### Why look at this chart?

- Same functionality as the previous chart (Annualized Rate of Return) except the periods are different.
- Focused only on 12 month periods.
- In this case, they run from March 31<sup>st</sup> year over year.



**12 Month Periods Ending March 31**

	2022	2021	2020	2019	2018	2017	2016	2015	2014	2013
Top 5%	14.87	37.18	4.02	10.90	10.58	17.22	2.85	22.20	22.91	13.98
25th Percentile	8.86	28.54	-1.71	7.12	6.00	13.21	0.87	14.71	17.70	11.64
<b>Median</b>	<b>6.29</b>	<b>23.75</b>	<b>-4.06</b>	<b>5.33</b>	<b>4.65</b>	<b>11.19</b>	<b>-0.43</b>	<b>12.82</b>	<b>15.74</b>	<b>9.54</b>
75th Percentile	3.19	18.66	-8.24	4.13	2.87	9.29	-2.00	10.12	12.56	7.95
Bottom 5%	-0.52	9.72	-13.29	0.92	0.27	6.19	-5.31	6.85	6.44	5.91
<b>Sample Balanced Fund</b>	<b>12.25</b>	<b>29.07</b>	<b>-5.18</b>	<b>10.90</b>	<b>3.69</b>	<b>13.36</b>	<b>-1.38</b>	<b>11.29</b>	<b>16.17</b>	<b>10.50</b>
Rank	10	22	57	6	67	25	65	64	42	36
<b>GMR Balanced Index</b>	<b>7.04</b>	<b>22.91</b>	<b>-4.01</b>	<b>6.70</b>	<b>3.87</b>	<b>11.24</b>	<b>-2.06</b>	<b>11.83</b>	<b>13.06</b>	<b>7.32</b>
Rank	44	55	48	31	64	48	75	57	69	80

Asset Class: Balanced.  
Benchmark: 5% iShares Premium Money Market ETF; 35% iShares ( MSCI World ETF

ares

# Return / Standard Deviation (4-Year)



Balanced  
Annualized Return vs. Standard Deviation  
For 4 Year Period as of March 31, 2022

- Balanced
- Sample Balanced Fund
- ★ GMR Balanced Index

### How to Interpret this chart

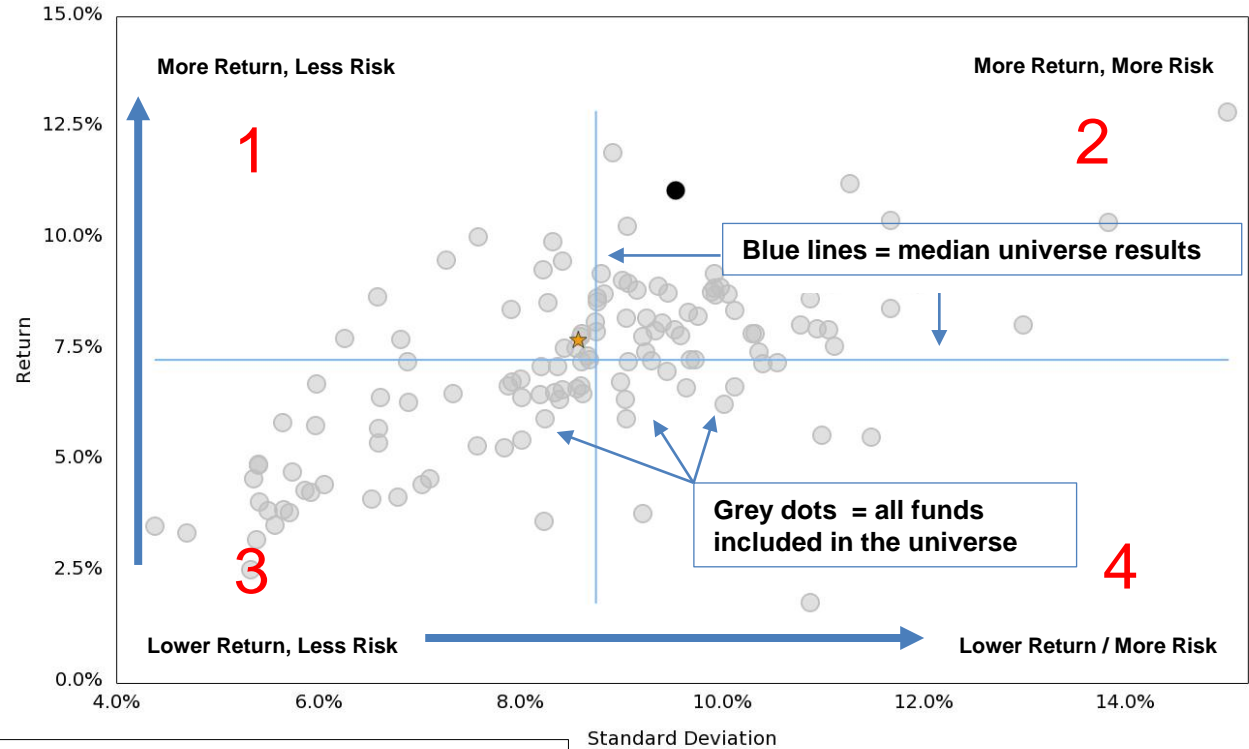
1. **First Quadrant** = Higher return / lower risk.  
**This is the ideal place to be.**
2. **Second Quadrant** = Higher return / higher risk.
3. **Third Quadrant** = Lower return / lower risk.
4. **Fourth Quadrant** = Lower return / higher risk.  
**This is where you don't want to be.**

**X Axis** = Standard Deviation (Risk)

**Y Axis** = Rate of Return (%)

### Why is this chart is so popular?

- Demonstrates the amount of risk taken to achieve a Fund's rate of return.
- Easy to compare a Fund's standard Deviation (risk) against the entire universe.



# Value of a Dollar

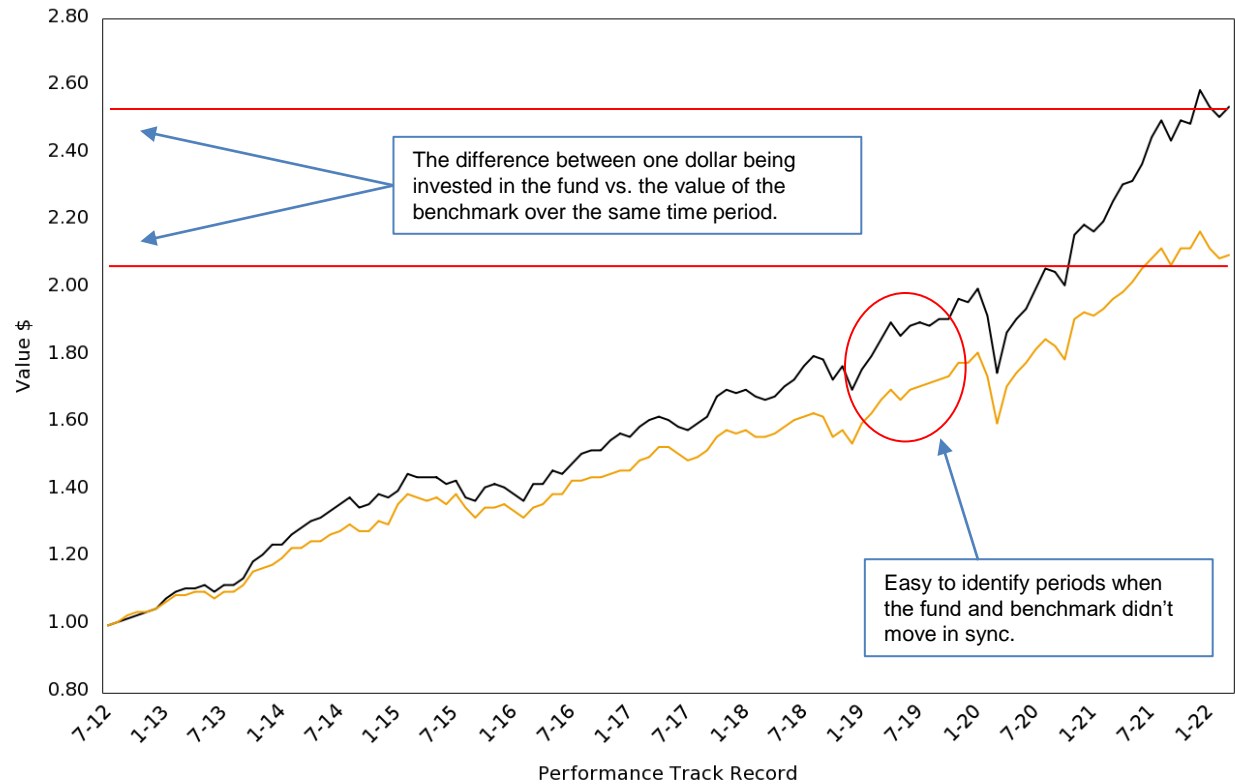
Value of a Dollar  
March 31, 2022



- Sample Balanced Fund
- ★ GMR Balanced Index

## What does this chart tell you?

- Easy comparison of one dollar invested in two different vehicles.
- The default chart is usually a fund vs benchmark but often you'll see multiple funds plotted head-to-head.
- Great chart for looking at long time horizons.
- Offers perspective.



# GMR Canadian Equities Universe – Ex Small Cap

---

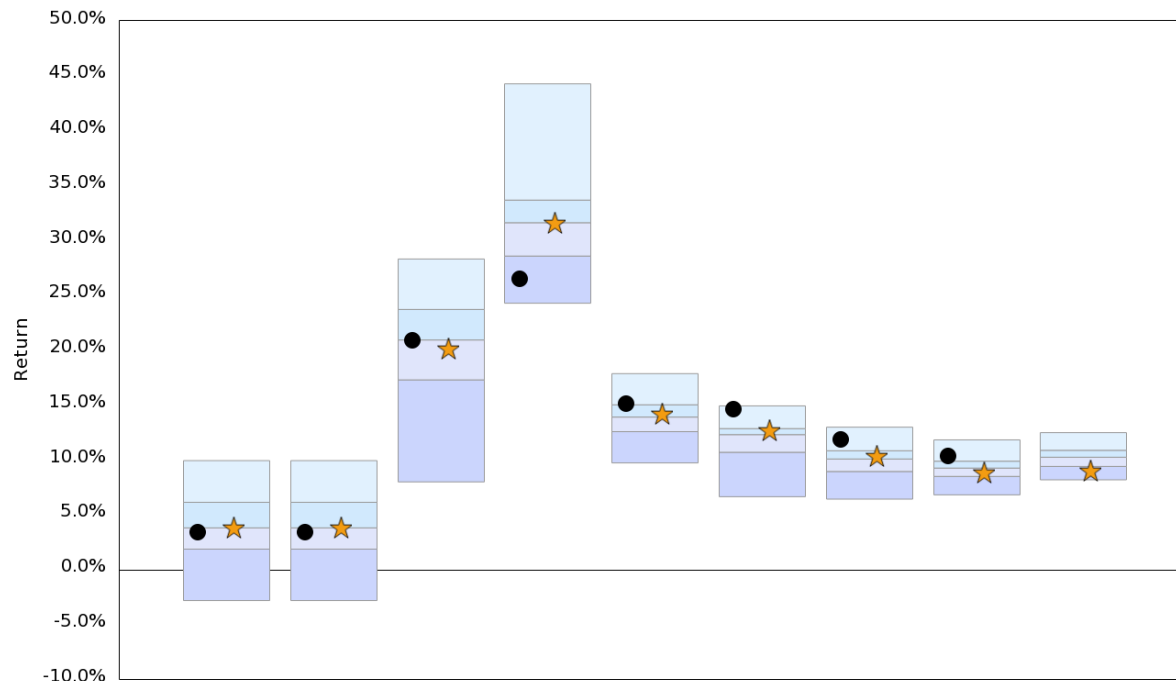
## Sample Canadian Equity Fund

# Annualized Returns

Canada Equities  
Annualized Rate of Return as of March 31, 2022



● Sample Canadian Equity Fund  
★ iShares Core S&P/TSX Capped Composite Index ETF



	Three Months	YTD	Annualized Rate of Return as of March 31, 2022						
			1 Year	2 Years	3 Years	4 Years	5 Years	7 Years	10 Years
Top 5%	9.91	9.91	28.29	44.26	17.84	14.90	12.96	11.80	12.46
25th Percentile	6.11	6.11	23.69	33.66	15.00	12.83	10.81	9.86	10.85
<b>Median</b>	<b>3.78</b>	<b>3.78</b>	<b>20.91</b>	<b>31.60</b>	<b>13.88</b>	<b>12.28</b>	<b>10.06</b>	<b>9.23</b>	<b>10.22</b>
75th Percentile	1.84	1.84	17.27	28.56	12.55	10.67	8.92	8.47	9.38
Bottom 5%	-2.85	-2.85	7.97	24.26	9.70	6.62	6.40	6.79	8.16
<b>Sample Canadian Equity Fund</b>	<b>3.37</b>	<b>3.37</b>	<b>20.91</b>	<b>26.49</b>	<b>15.13</b>	<b>14.57</b>	<b>11.85</b>	<b>10.30</b>	<b>N/A</b>
Rank	58	58	49	85	21	8	11	14	
<b>iShares Core S&amp;P/TSX Capped Composite Index ETF</b>	<b>3.81</b>	<b>3.81</b>	<b>20.11</b>	<b>31.61</b>	<b>14.17</b>	<b>12.64</b>	<b>10.36</b>	<b>8.87</b>	<b>9.01</b>
Rank	46	46	57	48	42	34	42	59	84

Asset Class: Equities. Region: Canada. Category: All Cap, Mid Cap, Mid Large Cap, Large Cap.

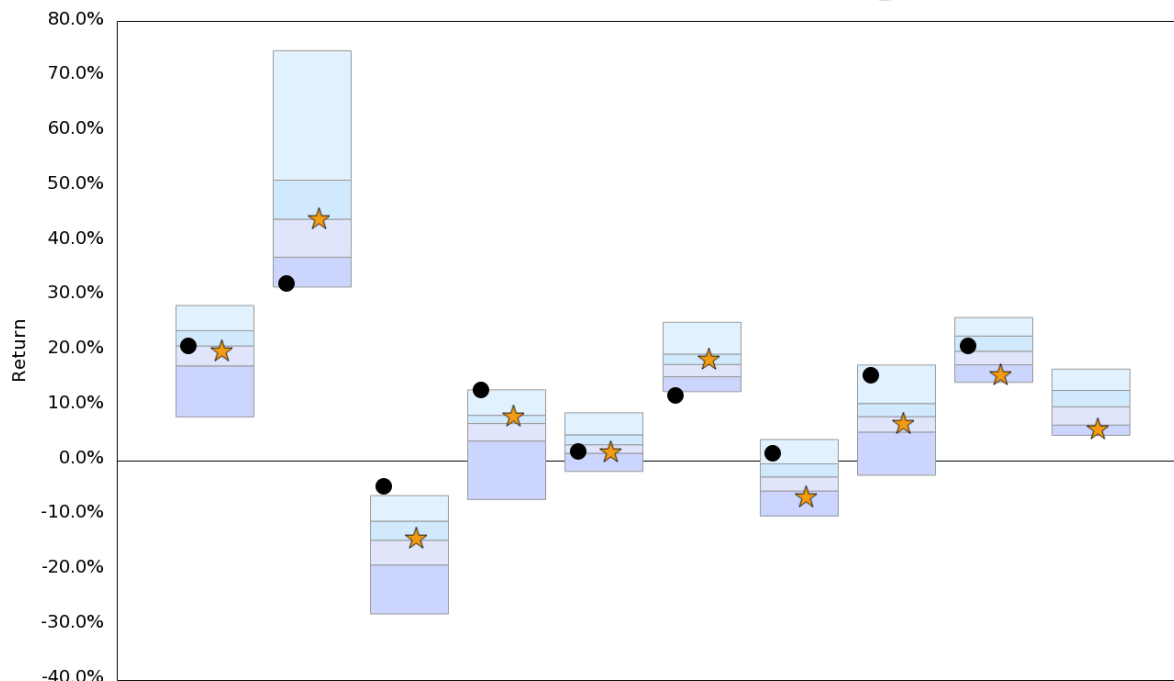


# Annual Returns

Canada Equities  
Annual Rate of Return as of March 31, 2022



● Sample Canadian Equity Fund  
★ iShares Core S&P/TSX Capped Composite Index ETF



	12 Month Periods Ending March 31									
	2022	2021	2020	2019	2018	2017	2016	2015	2014	2013
Top 5%	28.29	74.74	-6.37	12.91	8.73	25.23	3.85	17.43	26.10	16.69
25th Percentile	23.69	51.14	-11.04	8.26	4.70	19.42	-0.58	10.42	22.71	12.80
<b>Median</b>	<b>20.91</b>	<b>44.02</b>	<b>-14.52</b>	<b>6.77</b>	<b>2.89</b>	<b>17.53</b>	<b>-2.97</b>	<b>8.02</b>	<b>19.95</b>	<b>9.82</b>
75th Percentile	17.27	37.09	-19.03	3.58	1.35	15.30	-5.54	5.21	17.48	6.49
Bottom 5%	7.97	31.65	-27.95	-7.08	-1.97	12.58	-10.11	-2.66	14.26	4.61
<b>Sample Canadian Equity Fund</b>	<b>20.91</b>	<b>32.34</b>	<b>-4.62</b>	<b>12.91</b>	<b>1.61</b>	<b>11.83</b>	<b>1.42</b>	<b>15.59</b>	<b>20.98</b>	<b>N/A</b>
Rank	49	90	4	5	68	95	16	10	39	
<b>iShares Core S&amp;P/TSX Capped Composite Index ETF</b>	<b>20.11</b>	<b>44.21</b>	<b>-14.08</b>	<b>8.16</b>	<b>1.69</b>	<b>18.54</b>	<b>-6.60</b>	<b>6.85</b>	<b>15.67</b>	<b>5.82</b>
Rank	57	47	46	27	65	40	86	65	88	83

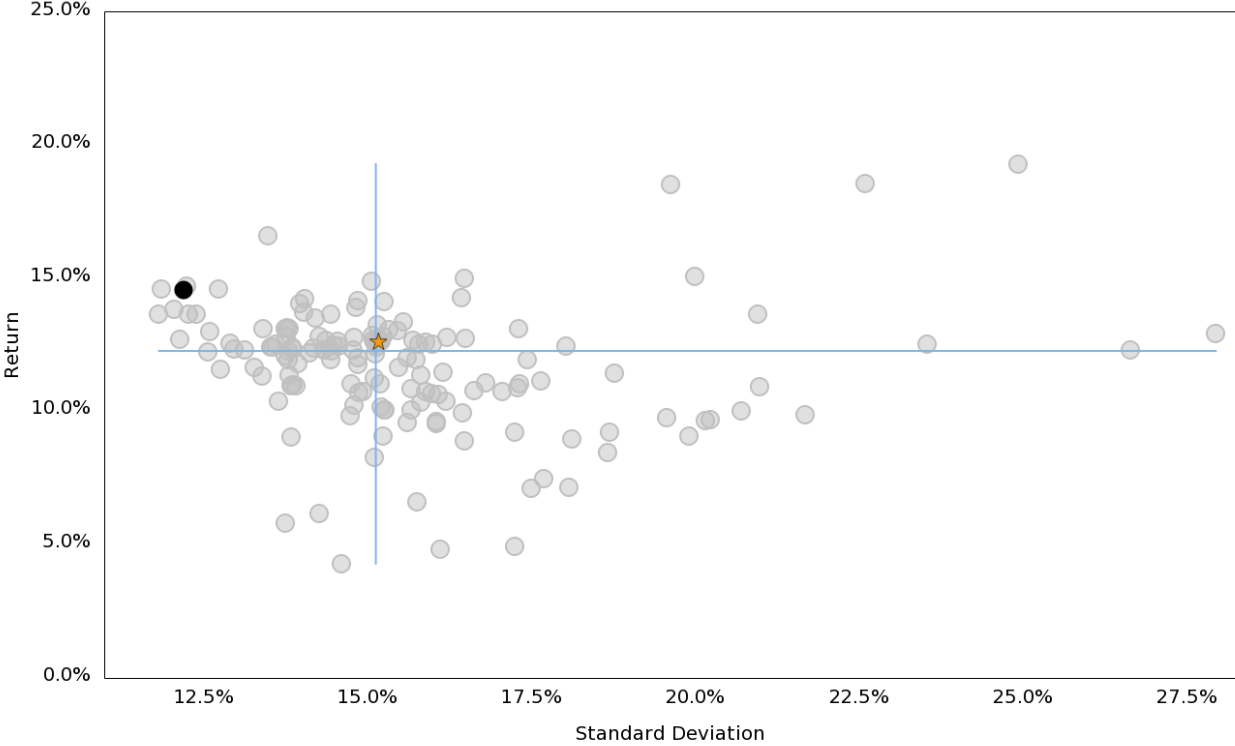
Asset Class: Equities. Region: Canada. Category: All Cap, Mid Cap, Mid Large Cap, Large Cap.

# Return / Standard Deviation (4-Year)

Canada Equities  
Annualized Return vs. Standard Deviation  
For 4 Year Period as of March 31, 2022



- Canada Equities
- Sample Canadian Equity Fund
- ★ iShares Core S&P/TSX Capped Composite Index ETF



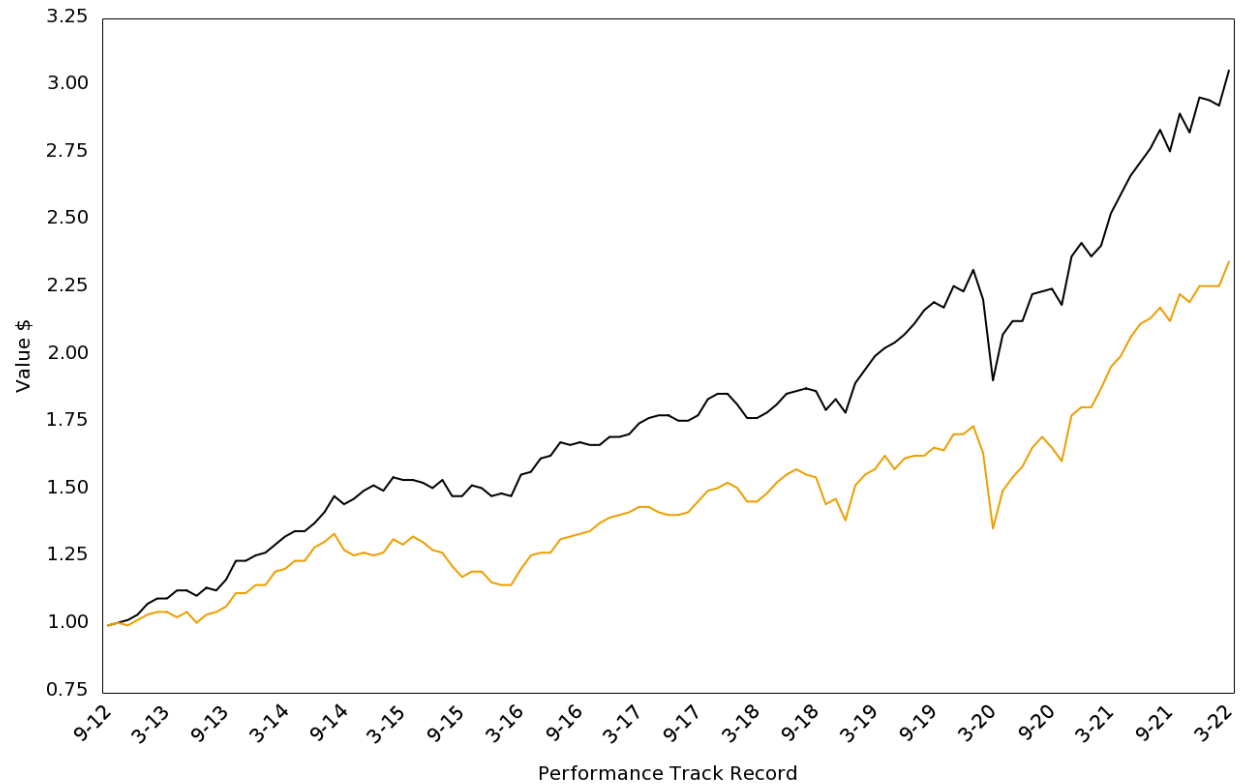
Asset Class: Equities. Region: Canada. Category: All Cap, Mid Cap, Mid Large Cap, Large Cap.

# Value of a Dollar

Value of a Dollar  
March 31, 2022



- Sample Canadian Equity Fund
- ★ iShares Core S&P/TSX Capped Composite Index ETF



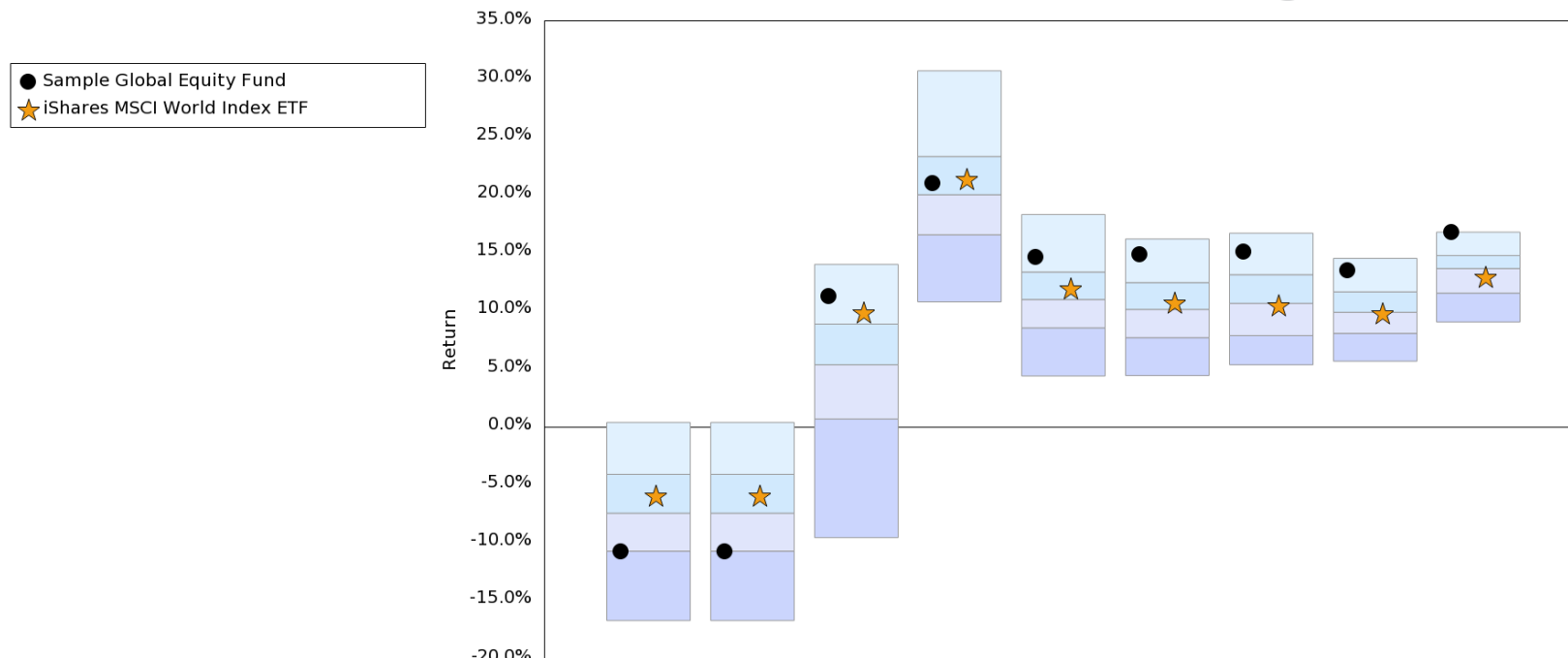
# GMR Global Equities Universe – Ex Small Cap

---

## Sample Global Equity Fund

# Annualized Returns

Global Equities  
Annualized Rate of Return as of March 31, 2022

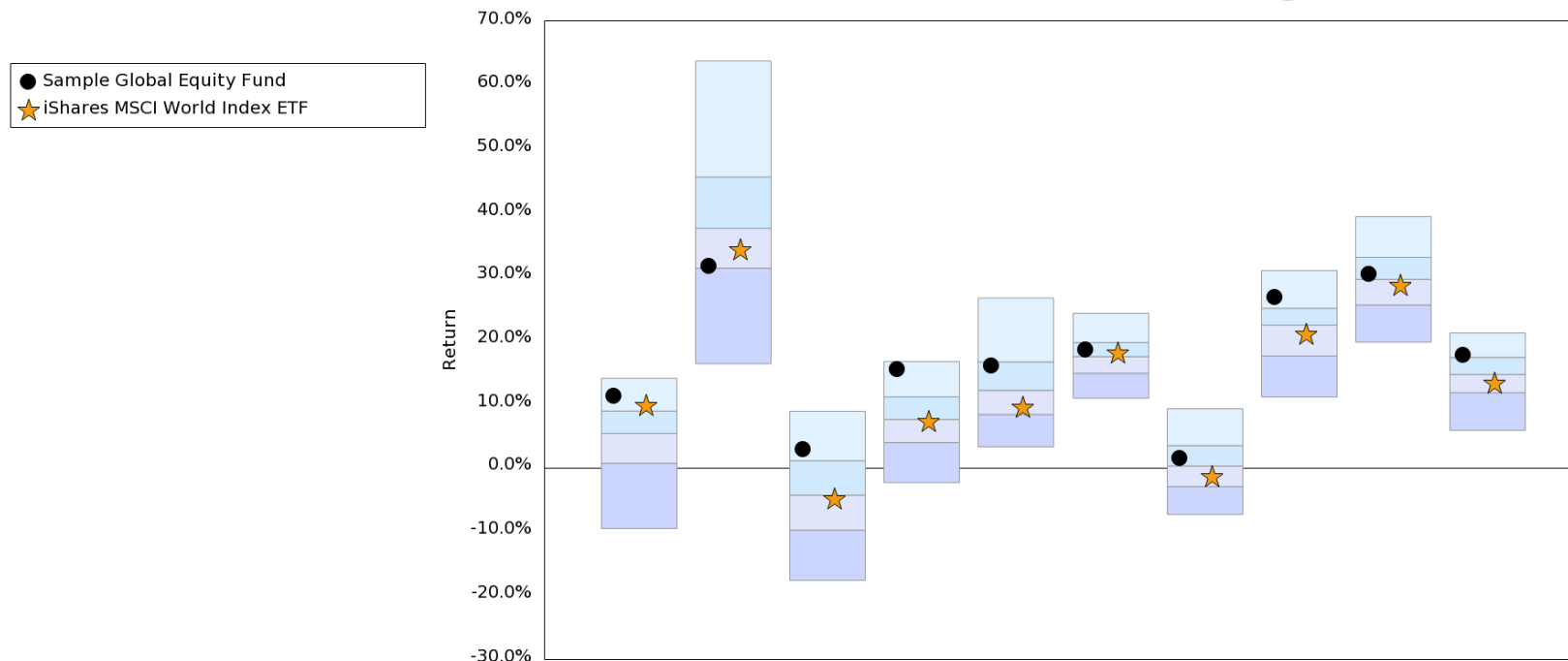


	Three Months	YTD	Annualized Rate of Return as of March 31, 2022						
			1 Year	2 Years	3 Years	4 Years	5 Years	7 Years	10 Years
Top 5%	0.40	0.40	14.03	30.72	18.33	16.22	16.72	14.55	16.81
25th Percentile	-4.08	-4.08	8.88	23.33	13.37	12.46	13.14	11.66	14.79
<b>Median</b>	<b>-7.43</b>	<b>-7.43</b>	<b>5.37</b>	<b>20.04</b>	<b>11.00</b>	<b>10.15</b>	<b>10.67</b>	<b>9.90</b>	<b>13.67</b>
75th Percentile	-10.70	-10.70	0.69	16.58	8.55	7.71	7.89	8.08	11.55
Bottom 5%	-16.69	-16.69	-9.54	10.80	4.40	4.44	5.37	5.68	9.06
<b>Sample Global Equity Fund</b>	<b>-10.70</b>	<b>-10.70</b>	<b>11.27</b>	<b>21.04</b>	<b>14.68</b>	<b>14.87</b>	<b>15.10</b>	<b>13.53</b>	<b>16.81</b>
Rank	74	74	11	42	15	7	10	9	6
<b>iShares MSCI World Index ETF</b>	<b>-5.96</b>	<b>-5.96</b>	<b>9.84</b>	<b>21.42</b>	<b>11.93</b>	<b>10.76</b>	<b>10.51</b>	<b>9.77</b>	<b>12.98</b>
Rank	36	36	20	38	38	41	51	53	56

Asset Class: Equities. Region: Global. Category: All Cap, Mid Cap, Mid Large Cap, Large Cap.

# Annual Returns

Global Equities  
Annual Rate of Return as of March 31, 2022



	12 Month Periods Ending March 31									
	2022	2021	2020	2019	2018	2017	2016	2015	2014	2013
Top 5%	14.03	63.76	8.84	16.64	26.60	24.21	9.24	30.91	39.37	21.12
25th Percentile	8.88	45.57	1.09	11.10	16.59	19.62	3.47	24.99	32.97	17.30
<b>Median</b>	<b>5.37</b>	<b>37.55</b>	<b>-4.31</b>	<b>7.56</b>	<b>12.13</b>	<b>17.42</b>	<b>0.27</b>	<b>22.36</b>	<b>29.53</b>	<b>14.62</b>
75th Percentile	0.69	31.27	-9.80	3.94	8.34	14.80	-2.96	17.52	25.51	11.76
Bottom 5%	-9.54	16.30	-17.67	-2.34	3.27	10.88	-7.34	11.07	19.67	5.84
<b>Sample Global Equity Fund</b>	<b>11.27</b>	<b>31.67</b>	<b>2.94</b>	<b>15.45</b>	<b>16.03</b>	<b>18.50</b>	<b>1.56</b>	<b>26.73</b>	<b>30.45</b>	<b>17.64</b>
Rank	11	72	19	9	27	39	37	15	42	21
<b>iShares MSCI World Index ETF</b>	<b>9.84</b>	<b>34.23</b>	<b>-4.89</b>	<b>7.33</b>	<b>9.52</b>	<b>18.10</b>	<b>-1.34</b>	<b>21.00</b>	<b>28.69</b>	<b>13.27</b>
Rank	20	63	54	51	67	43	64	60	55	63

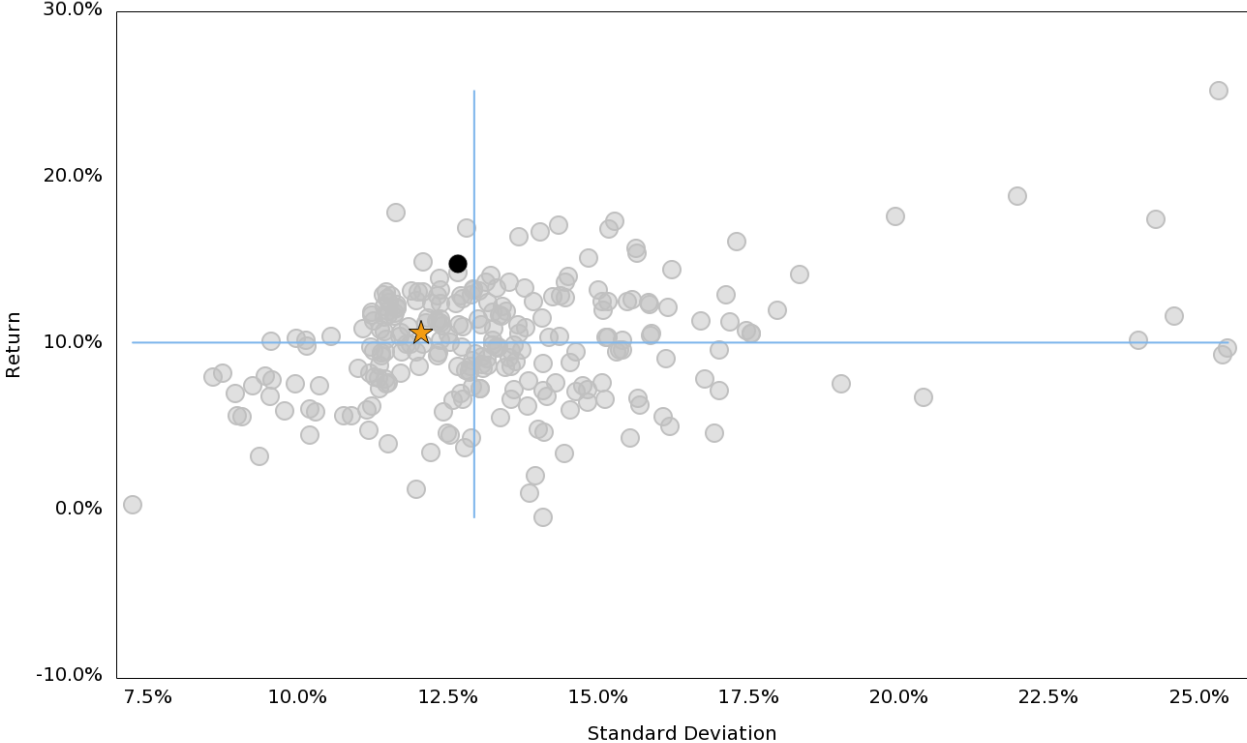
Asset Class: Equities. Region: Global. Category: All Cap, Mid Cap, Mid Large Cap, Large Cap.

# Return / Standard Deviation (4-Year)

Global Equities  
Annualized Return vs. Standard Deviation  
For 4 Year Period as of March 31, 2022



- Global Equities
- Sample Global Equity Fund
- ★ iShares MSCI World Index ETF



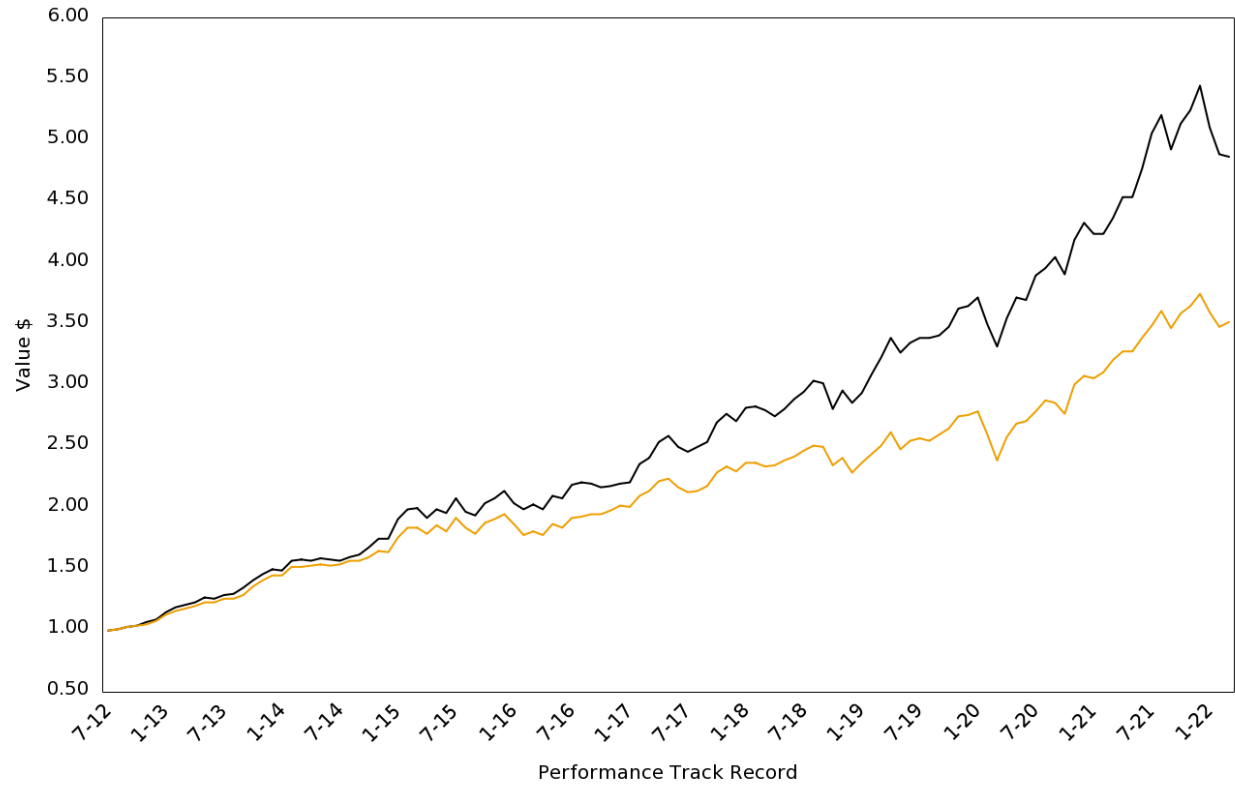
Asset Class: Equities. Region: Global. Category: All Cap, Mid Cap, Mid Large Cap, Large Cap.

# Value of a Dollar

Value of a Dollar  
March 31, 2022



- Sample Global Equity Fund
- ★ iShares MSCI World Index ETF





# **GMR Canadian Fixed Income Universe – Mid Term Duration**

---

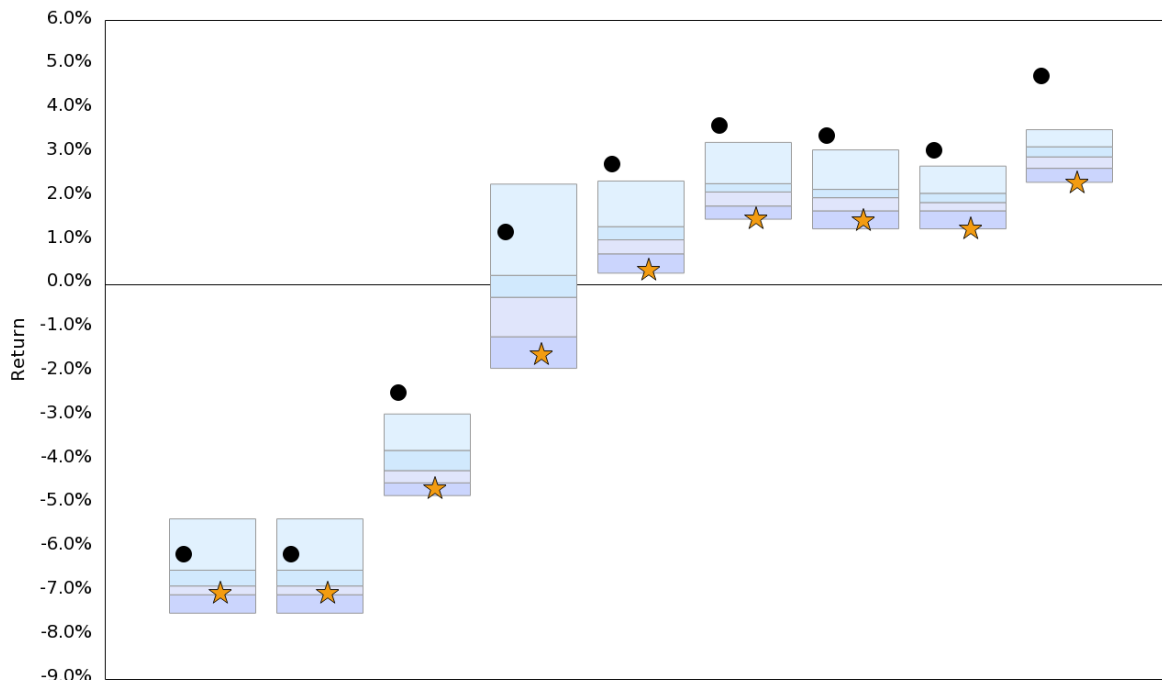
## **Sample Canadian Fixed Income Fund**

# Annualized Returns

Canada Fixed Income  
Annualized Rate of Return as of March 31, 2022



● Sample Canadian Fixed Income Fund  
★ iShares Core Canadian Universe Bond Index ETF



	Three Months	YTD	Annualized Rate of Return as of March 31, 2022						
			1 Year	2 Years	3 Years	4 Years	5 Years	7 Years	10 Years
Top 5%	-5.35	-5.35	-2.96	2.28	2.35	3.23	3.06	2.69	3.52
25th Percentile	-6.52	-6.52	-3.79	0.20	1.31	2.29	2.16	2.07	3.13
<b>Median</b>	<b>-6.88</b>	<b>-6.88</b>	<b>-4.25</b>	<b>-0.30</b>	<b>1.01</b>	<b>2.10</b>	<b>1.97</b>	<b>1.86</b>	<b>2.90</b>
75th Percentile	-7.08	-7.08	-4.53	-1.20	0.69	1.78	1.67	1.67	2.64
Bottom 5%	-7.50	-7.50	-4.82	-1.92	0.25	1.48	1.26	1.26	2.32
<b>Sample Canadian Fixed Income Fund</b>	<b>-6.15</b>	<b>-6.15</b>	<b>-2.48</b>	<b>1.18</b>	<b>2.73</b>	<b>3.62</b>	<b>3.38</b>	<b>3.05</b>	<b>4.74</b>
Rank	15	15	4	12	3	3	3	3	4
<b>iShares Core Canadian Universe Bond Index ETF</b>	<b>-7.03</b>	<b>-7.03</b>	<b>-4.64</b>	<b>-1.58</b>	<b>0.34</b>	<b>1.52</b>	<b>1.47</b>	<b>1.28</b>	<b>2.33</b>
Rank	69	69	85	87	91	88	88	92	90

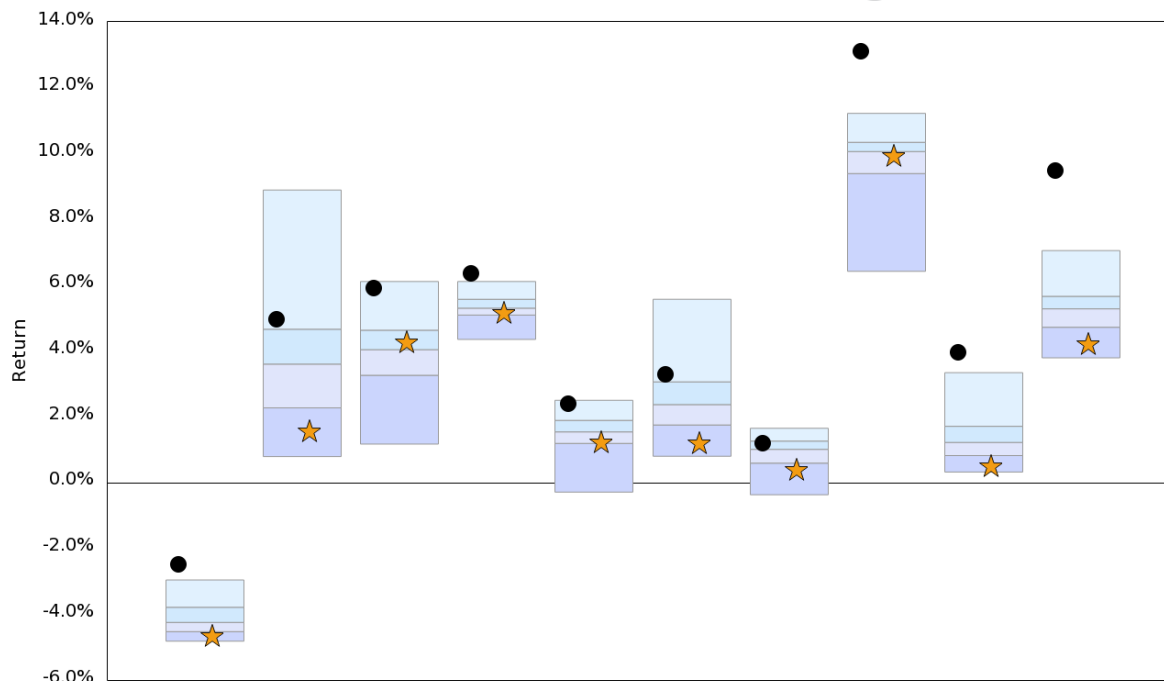
Asset Class: Fixed Income. Region: Canada. Style: Government, Universe, Core Plus. Category: 3.5 Years To 9.0 Years.

# Annual Returns

Canada Fixed Income  
Annual Rate of Return as of March 31, 2022



● Sample Canadian Fixed Income Fund  
★ iShares Core Canadian Universe Bond Index ETF



	12 Month Periods Ending March 31									
	2022	2021	2020	2019	2018	2017	2016	2015	2014	2013
Top 5%	-2.96	8.89	6.11	6.11	2.50	5.57	1.65	11.22	3.34	7.05
25th Percentile	-3.79	4.66	4.63	5.57	1.89	3.06	1.26	10.34	1.71	5.66
<b>Median</b>	<b>-4.25</b>	<b>3.60</b>	<b>4.04</b>	<b>5.30</b>	<b>1.54</b>	<b>2.37</b>	<b>1.01</b>	<b>10.06</b>	<b>1.22</b>	<b>5.28</b>
75th Percentile	-4.53	2.27	3.26	5.09	1.19	1.75	0.59	9.39	0.82	4.72
Bottom 5%	-4.82	0.79	1.17	4.35	-0.29	0.80	-0.37	6.42	0.32	3.79
<b>Sample Canadian Fixed Income Fund</b>	<b>-2.48</b>	<b>4.97</b>	<b>5.90</b>	<b>6.35</b>	<b>2.41</b>	<b>3.28</b>	<b>1.20</b>	<b>13.10</b>	<b>3.95</b>	<b>9.49</b>
Rank	4	24	7	4	8	17	32	3	4	2
<b>iShares Core Canadian Universe Bond Index ETF</b>	<b>-4.64</b>	<b>1.58</b>	<b>4.29</b>	<b>5.16</b>	<b>1.25</b>	<b>1.22</b>	<b>0.39</b>	<b>9.95</b>	<b>0.51</b>	<b>4.23</b>
Rank	85	83	38	72	71	91	83	52	88	87

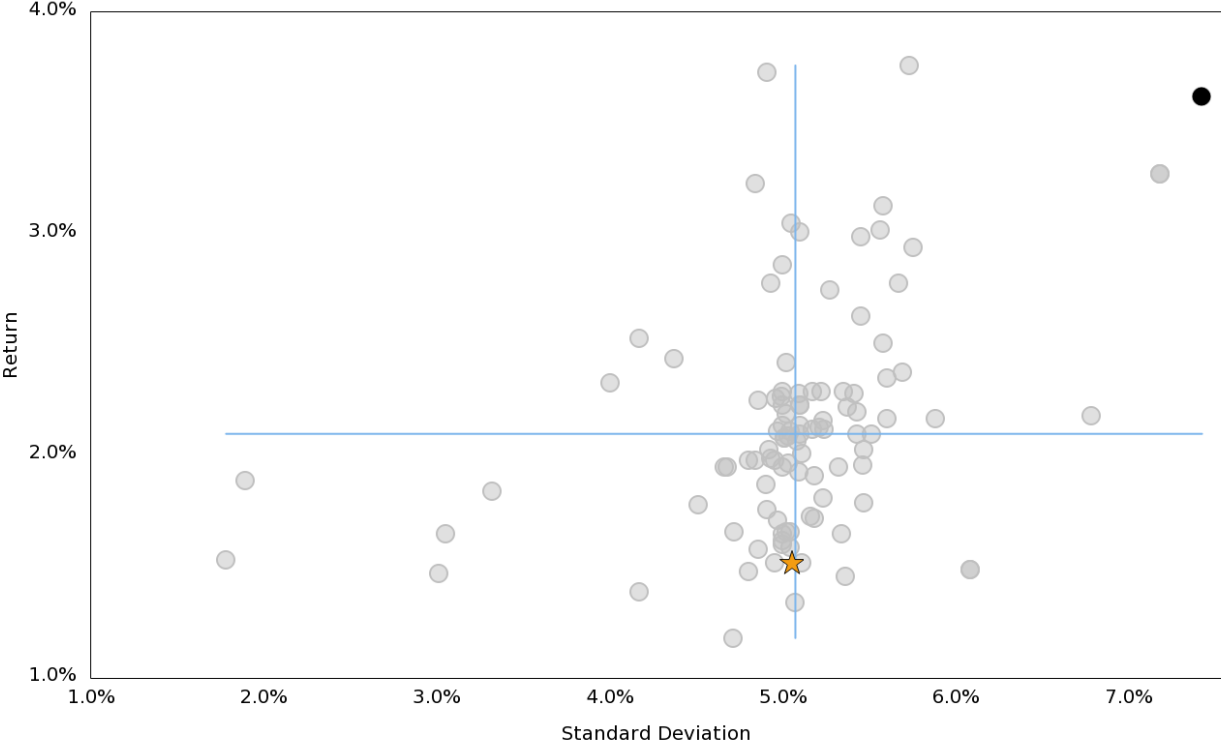
Asset Class: Fixed Income. Region: Canada. Style: Government, Universe, Core Plus. Category: 3.5 Years To 9.0 Years.

# Return / Standard Deviation (4-Year)

Canada Fixed Income  
Annualized Return vs. Standard Deviation  
For 4 Year Period as of March 31, 2022



- Canada Fixed Income
- Sample Canadian Fixed Income Fund
- ★ iShares Core Canadian Universe Bond Index ETF



Asset Class: Fixed Income. Region: Canada. Style: Government, Universe, Core Plus. Category: 3.5 Years To 9.0 Years.

# Value of a Dollar

Value of a Dollar  
March 31, 2022



- Sample Canadian Fixed Income Fund
- ★ iShares Core Canadian Universe Bond Index ETF

